



43 Gameboat

WALKAROUND | EXPRESS | GAMEBOAT | FLYBRIDGE



Performance Art

The Release 43 Gameboat takes classic design to a whole new level of sophistication and performance.



Timeless

The 43 Gameboat continues our proud legacy of building timelessly beautiful and endlessly fishable semi-custom boats.

What defines a perfect sportfishing boat? Opinions will vary, but most experienced captains will agree that a combination of beautiful, classic lines and superior craftsmanship are a must. Then you need to add speed, a well-thought-out cockpit, and a comfortable layout for the family, combined with a smooth, stable, and dry ride in rough seas, and unsurpassed seaworthiness in any conditions. These attributes describe every Release Boatworks model perfectly.

All Release boats feature fishing-friendly design attributes like low gun-wales for the easy handling of billfish, a clean wake at trolling speeds, and multiple livewells and fish boxes placed where they make sense. The cockpit sole has the perfect amount of camber to drain water to the scuppers quickly, while the tackle center holds enough terminal gear for a week's worth of fishing. And most importantly, you need passion. That comes standard on every Release we build.



JIM TURNER
Founder



VACUUM-INFUSED RESIN

Release utilizes a state-of-the-art vacuum-infused resin molding process.



CRAFTSMANSHIP

At the end of the day, works of art still require skill and a perfectionist's eye.



COMPOSITES

Every Release is 100-percent composite, using only the most advanced materials.



The Release 43 Gameboat retains a beautiful, classic profile favored by many anglers, and also incorporates cutting-edge technology and state-of-the-art materials, making every Release a truly unique offering among today's look-alike convertible yachts.

Our process includes a vacuum-infused hull built using blister-resistant modified epoxy resin, creating a single piece from Airex foam cores and E-glass hybrid fiberglass laminates to maximize strength while minimizing weight. The interior of the hull gets an isophthalic gelcoat topcoat with a durable, high-gloss polyurethane coating, and the exterior consists of high-performance isophthalic gelcoat npg with superior gloss, flexibility, and outstanding weathering characteristics.

The stringers are built with fiberglass encapsulated foam, and the bulkheads are vacuum infused with composite cores. The extensive use of composite materials throughout the boat creates an incredibly strong boat and saves a great deal of weight, providing superior performance.

100

percent composite used in every Release Boatworks model built in our Egg Harbor, New Jersey, production facility. This follows our belief in weight reduction and increased strength through innovation.

35

knots is the top speed with the standard 550-hp Cummins QSB6.7 diesels. Expect a cruise speed with these standard engines of 30 knots. Engine options include 600-hp Cummins QSCs and 600-hp Volvo Penta D-8s.



LEGACY

Legacy fuels the lines, the ride, and the soul of every Release Boatworks design—custom-built for those who know where they're going and value where it all began.



The Release 43 Gameboat is a study in precision—because in a true custom sportfish, the smallest details deliver the biggest impact. The flybridge helm (above) is laid out with the captain in mind—clean sightlines, perfectly placed controls, and no wasted motion necessary, because precision starts behind the wheel. The 43's spacious 140-square-foot cockpit is ergonomically designed to give the angler every advantage.



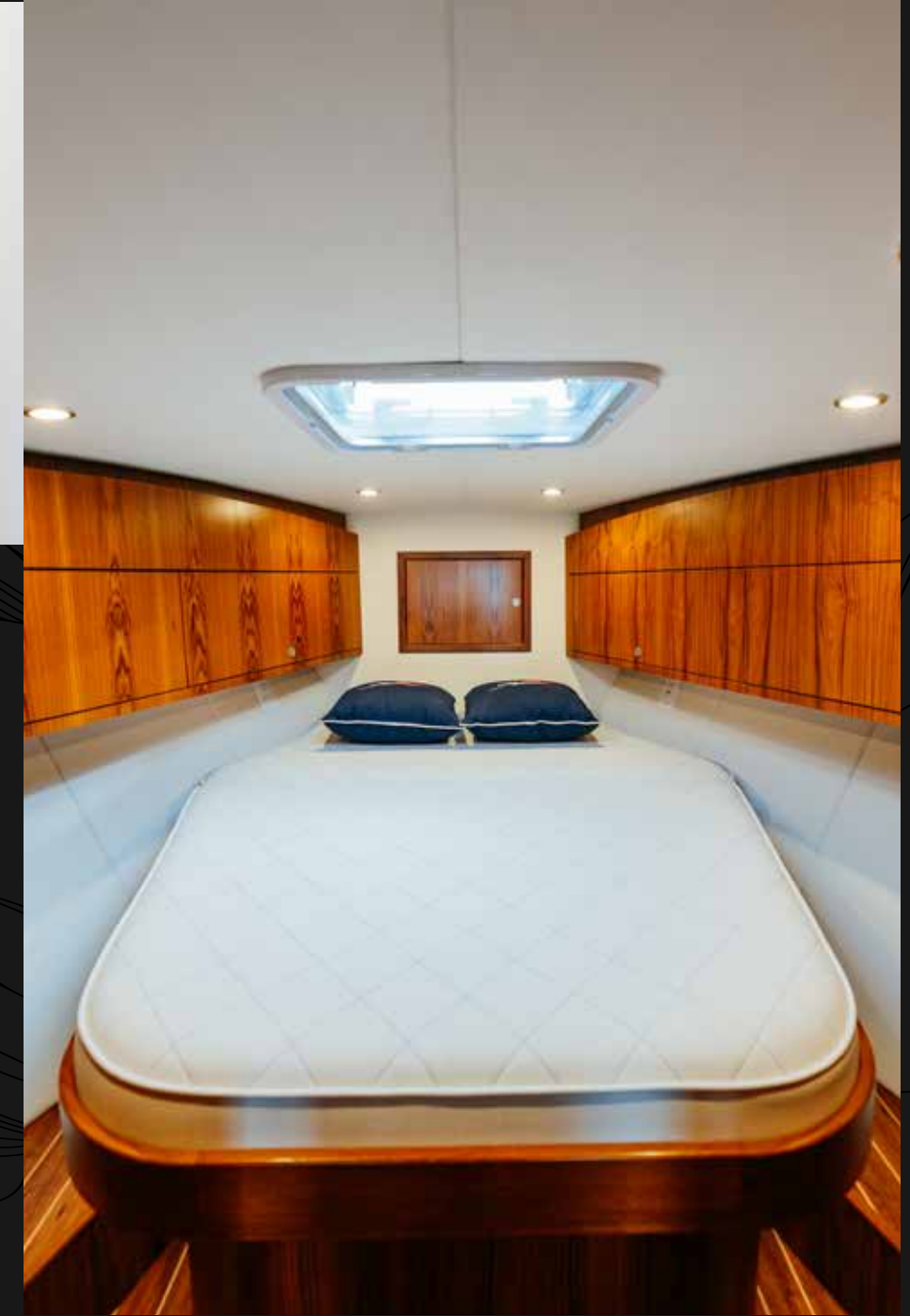


CRAFTSMANSHIP

With every Release, you're not just getting a boat—you're joining a lineage shaped by tradition, craftsmanship, and the waters of the New Jersey coast.

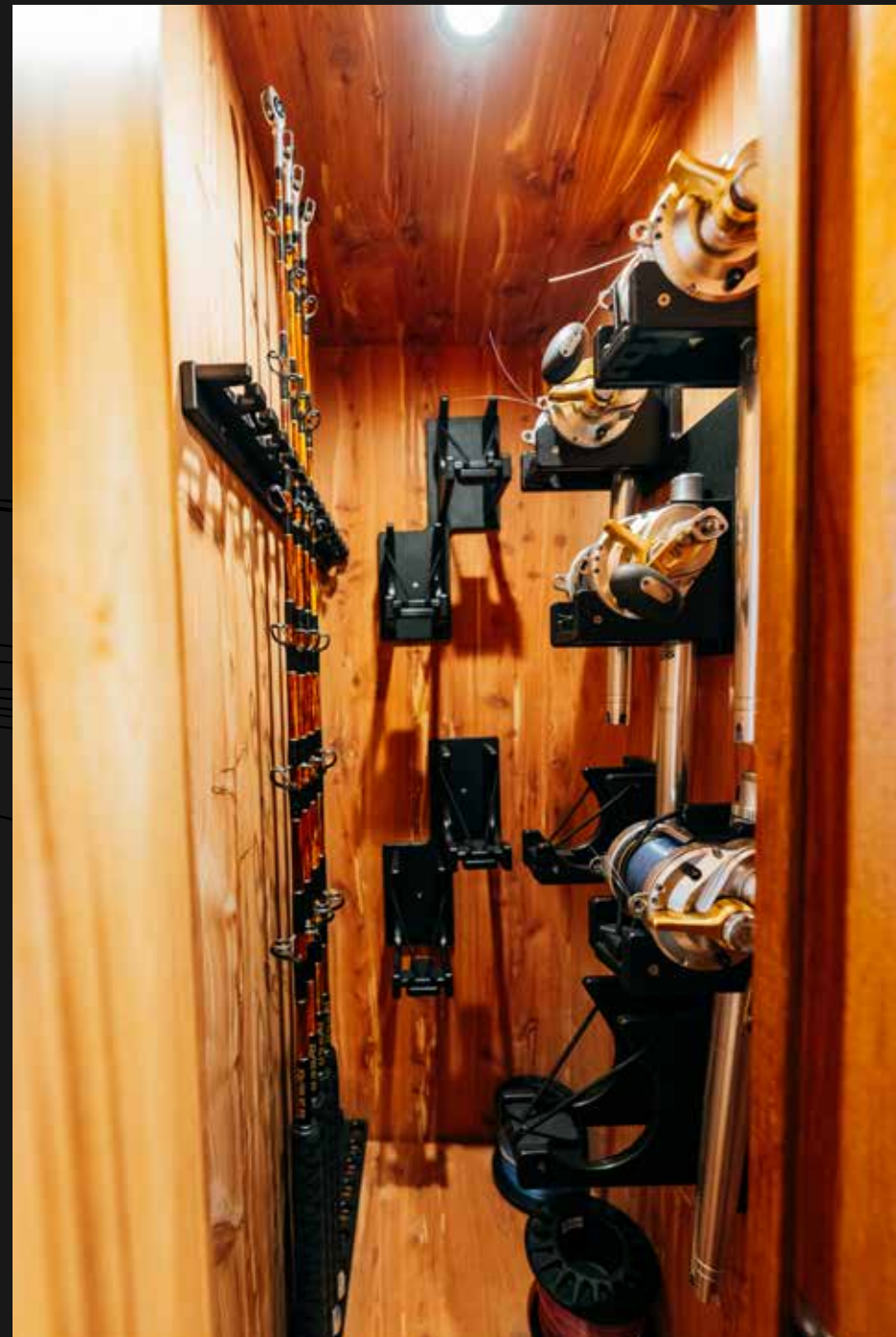


In order to achieve the high level of fit and finish found in every semi-custom Release Boatworks, our team builds almost every component in-house. This not only allows us to deliver a customized boat for each owner, it also ensures we maintain complete quality control. The guest stateroom (above) accommodates family and friends. The master stateroom (right) is designed to accommodate big adventures with plenty of stowage.



DETAILS MATTER

Details define the difference between a good boat and a great one.
That's why every Release is obsessively crafted, inch by inch.



Easy mechanical access isn't an afterthought—it's a signature on every Release Boatworks design. Because when things matter most, you want systems that are ready to work as hard as you do. From custom rod and reel stowage to dedicated tackle drawers designed by experts to teak underfoot, a Release isn't just a boat—it's a command post built for serious fishing and adventures beyond the horizon.



The 43 Gameboat

The Release Boatworks Flybridge Gameboat is for the boat owner who views protection from the elements as an important feature of a custom sportfish. Our Flybridge Gameboat provides our seaworthy hull with a highly fishable cockpit and clean wake for chasing pelagics offshore, as well as well-found accommodations below for overnight trips. The Release Boatworks Flybridge Gameboat is currently available in models 43, 46, 55.

43 FLYBRIDGE GAMEBOAT

LOA: 43'0"

Beam: 14'10"

Deadrise (at transom): 14.5 degrees

Draft: 3'9"

Displacement: 34,000 lbs

Fuel Capacity: 620 gal

Water Capacity: 60 gal

Holding Tank Capacity: 10 gal

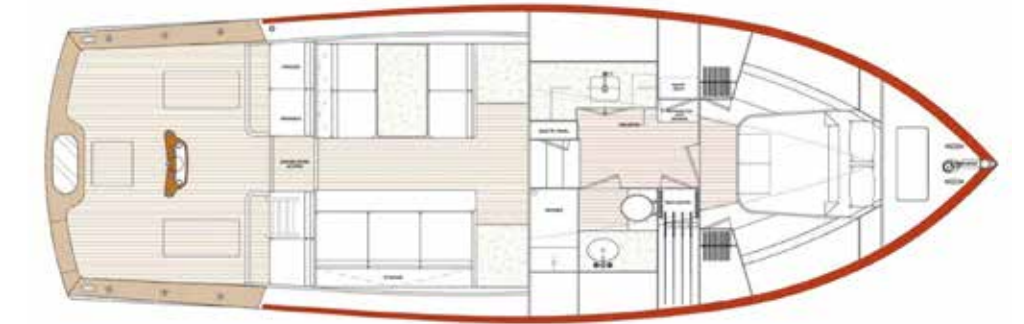
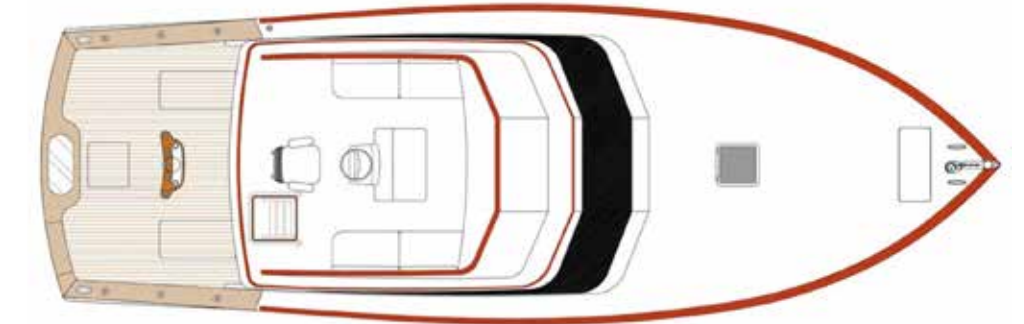
Cockpit Area: 140 sq ft

Standard Engines: 2x 550-hp Cummins

CONSTRUCTION DETAILS

- Blister-resistant vinylester resin in entire hull skin
- Custom-blended modified epoxy and polyester resin used in structural laminates and topsides
- Dockside and overboard pump-outs for holding tank
- DuPont high-gloss polyurethane boot stripe
- Satin cherry interior finish throughout (Options available)
- High-performance isophthalic gelcoat for superior gloss
- Hull constructed using Airex foam cores with Aramid and E-glass hybrid fiberglass laminates
- Hull interior – gelcoat topcoat
- Aluminum fuel tanks & molded freshwater & holding tanks
- Molded fiberglass engineroom ceiling with core for acoustical and thermal insulation
- Stringers, fiberglass-encapsulated foam
- Vacuum-infused composite bulkheads

- Air Conditioning – direct expansion zoned with reverse-cycle heat for complete climate control throughout the interior
- Bilge pumps with additional clean-out pumps on centerline linked into monitoring system and connected to switches for automatic and manual operation
- Optimus fly-by-wire steering
- Engineroom ventilation system
- Fire-suppression system
- Fuel and oil lines, USCG approved
- Fuel priming pumps electric 12V DC, for main engines
- Mufflers – engines, in-line type with surge tubes
- Oil-changing system
- PEX plumbing throughout
- Pressurized freshwater system, 24V D/C pump with on-deck freshwater fill and cockpit dockside supply inlet
- Propellers – Nibral
- Racor fuel-water separators for main engines and generator
- Rudders w/ composite rudder bearing and drip-less seal
- Seacocks, ball-type sea valves
- Shafts – 2 Aquamet high-strength stainless steel
- Struts – Nibral
- Trim tabs, with individual controls
- Twin diesel engines with marine-grade reduction gears



TAILOR MADE

Every Release 43 Gameboat represents her particular owners: How they use their boat, how they fish, where they fish, and what adventures they have planned. Furthermore, our team is not just renowned boatbuilders, they're also fishing enthusiasts themselves, who know precisely how to translate our owners' vision into a boat that is testament to them and the legacy of Release. These accommodation plans are meant as a general guide of what is possible on the 43 Gameboat.

The Release 43 Gameboat *Riser* headed into the Atlantic.



BORN
IN NEW JERSEY.
BACKED BY OUR LEGACY. BUILT FOR THOSE WHO KNOW.

The Release Boatworks 43 Gameboat isn't for everyone. It's for the purists, the pros, and the passionate—the ones who know what a real sportfish should look like, how it should ride, and how it should fish. With its classic lines, unshakable ride, and unmistakable Release DNA, the 43 Gameboat is a return to form—with no compromises.

At the heart of the 43 is an Erwin Gerard-designed hull that delivers speed, balance, and efficiency in every sea. It's a ride that speaks louder than words—soft in the troughs, sharp on the turns, and always in command. Above the waterline, the profile is all business: crisp sheer, low-slung house, and just the right amount of flare. It's timeless. It's all Release.

Inside and out, the craftsmanship runs deep. Every inch of teak, every hidden hinge, every stitched seam is a nod to the boatbuilders who came before—and a challenge to anyone trying to follow.

This is custom sportfishing, the Release way. Built in New Jersey. Tuned for battle. Ready for wherever the bite takes you.



901 Duerer St., Egg Harbor, NJ 08215

(833) 347-4729

info@releaseboatworks.com

releaseboatworks.com